

MZF-Hseries

UV Bevel Laser Marking Machine

Average output power

3W / 5W / 10W



High precision marking



Portable, mini foldable



机型介绍

PRODUCT DESCRIPTION

MZF-H series bevel smart machine belongs to desktop UV laser marking equipment. It is a special model specially developed for high-precision marking, wide application range, compact and flexible equipment. It is developed with a 355nm ultraviolet laser. The material has a high absorption rate of ultraviolet light and has wider material adaptability. The focused spot of ultraviolet light is extremely small, and the processing heat-affected zone is very small, which is more suitable for ultra-fine marking of various materials.

Ultraviolet bevel laser marking machine is used in the high-end market of ultra-fine processing, fine cutting, and micro-processing. It is mainly used for various materials such as glass, LCD screen, textiles, thin ceramics, semiconductor or silicon wafers, IC grains, sapphire, and polymer films. marking and surface treatment.

MZF-H series

UV laser marking machine series

The MZF-H sub-series uses the pulsed UV laser of JPT Laser, which has excellent beam quality and perfect spot characteristics. The whole machine adopts an integrated structure design, and the optical path and external drive circuit are integrated, which makes this product series have strong anti-interference ability. Optimize and upgrade the fully sealed structure to effectively prevent external dust from entering.

机型参数

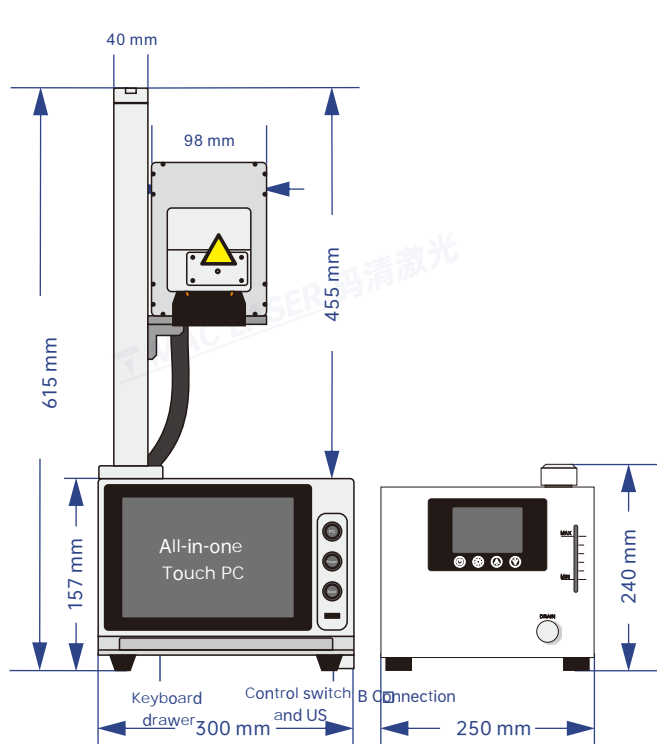
PRODUCT PARAMETER

Model series		MZF-H series (Jupiter laser)		
model		MZF-3H	MZF-5H	MZF-10H
Laser parameters	Laser model	SEAL-355-3	SEAL-355-5	SEAL-355-10S
	Output Power	3W	5W	10W
	beam qualityM ²	< 1.2		
	Laser wavelength	355 nm		
	Pulse frequency	20-150 kHz		40-300 kHz
	Exit beam diameter	0.7±0.1 mm		0.8±0.1 mm
	output power stability	3%		
	Design life	About 20,000 working hours (not service life)		
optical properties	Marking range	100~160mm (range optional)		
	Engraving Depth	1mm (depending on power and time)		
	Engraving speed	10000mm/s		
	Repeatability	±0.002		
	Minimum Marker Line Width	0.01mm		
	Minimum character height	0.03mm		
use environment	cooling method	water cooling		
	System power supply	500W / 220V / 50Hz (Can be connected to 110V)		
	temperature humidity	5~35° , 30% RH 85%		
	Oil mist, condensation	not allowed		
Other parameters	operating system	Windows operating system		
	file format	All fonts/typefaces of WINDOWS operating system font library (standard USB input)		
	Dimensions	Marking machine 300X460X615mm water tank 250X340X24mm		
	Total Weight	about 30kg		

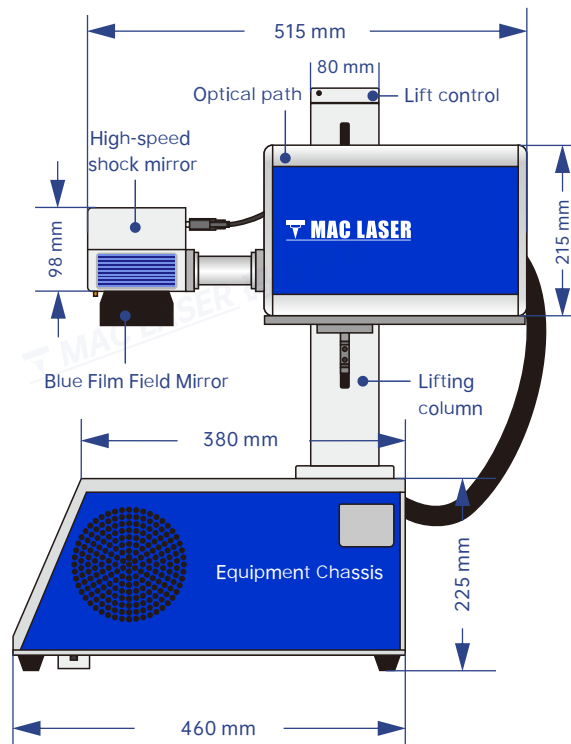
Note: Laser marking machines with different power (W) have differences in marking accuracy, depth, speed, color depth and service life. When purchasing, please communicate with the business personnel of the code clearer according to the marking products and needs. Then choose a plan.

机型尺寸

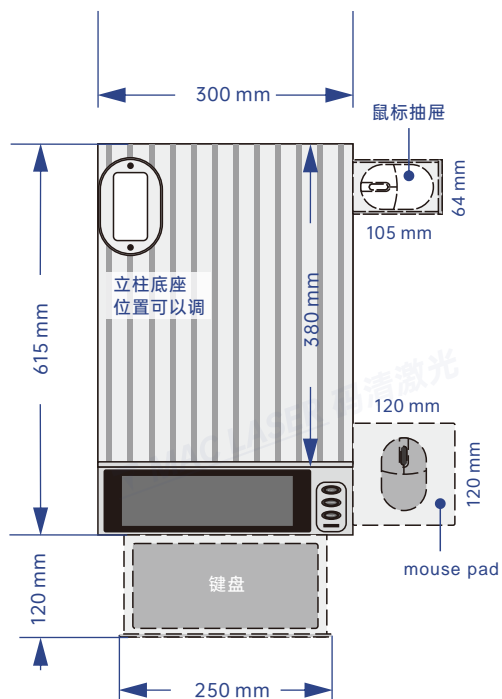
PRODUCT
SIZE



device front

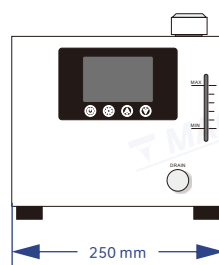


device side

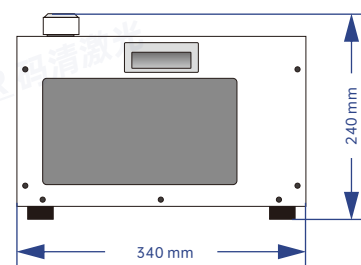


Device desktop (top view)

Industrial Chiller



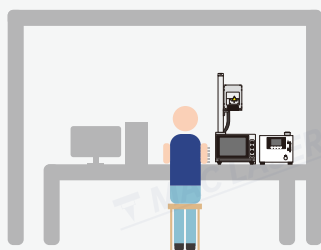
front



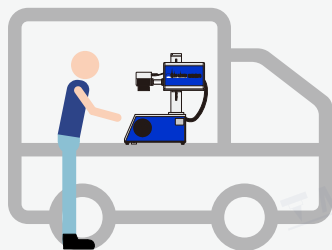
side

应用场景

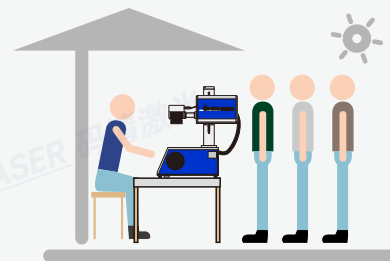
APPLICATION
SCENARIO



● small studios



● Street stall economy



● Outdoor activities

应用范围

SCOPE OF
APPLICATION



手机通讯

Mobile Communications



玻璃陶瓷

Glass ceramics



金属产品

Metal products



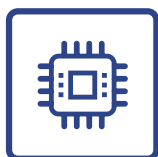
彩妆化妆品

Make-up cosmetics



食品包装

Food packaging



电子元件

Electronic component



建筑材料

Building materials



礼品包装

Gift wrap

Mobile Communications/Electronic Components



Apple series product mark



3C component mark



Car function control panel marking

Glass Ceramics/Building Materials



Goblet bottom mark



glass crafts markers



ceramic bowl marker



wallpaper tag



cable marking



Acrylic Signage Marking

Metal Products/Food Packaging



nameplate personalized mark



Outdoor multi-function buckle tag



metal jewelry tag



carton date stamp



Food Bag Date Marker



Traceability code marking on cans

Makeup Cosmetics/Gift Packaging



lipstick casing mark



foundation box mark



perfume bottle mark



Wooden box packaging mark



Caviar Packaging Marking



High-end cigar package mark